

## 1

## 1



- 1

1

- 1

## 1

E24140 E.00 - ELECTRICAL COVER SHEET  
E24140 E.01 - ELECTRICAL MCC ELEVATION  
E24140 E.10 - ELECTRICAL POWER PLAN GND LVL EL. 107'  
E24140 E.20 - LIGHTING AND RECEPTACLE PLAN GND LVL EL. 107'  
E24140 E.21 - LIGHTING AND RECEPTACLE PLAN EL. 127'-0"  
E24140 E.22 - LIGHTING AND RECEPTACLE ROOF PLAN EL. 158'-2"  
E24140 E.23 - LIGHTING AND RECEPTACLE PLAN MEZZ EL. 167' - 177'  
E24140 E.24 - LIGHTING LUMINAIRE SCHEDULE & DETAILS  
E24140 E.25 - ELECTRICAL PANEL SCHEDULES  
E24140 E.30 - ELECTRICAL GROUNDING GRID PLAN



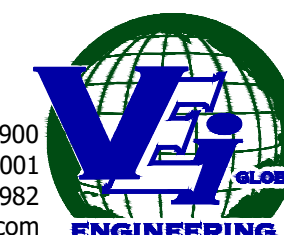
**PROJECT LOCATION**  
SCALE: N.T.S.

B	2025.06.23	JM	ISSUE FOR BID	-	
A	2025.06.18	JM	ISSUE FOR REVIEW	-	
No.	Date	By	Revision	Ad. No.	

PRELIMINARY  
NOT FOR  
CONSTRUCTION  
23 JUNE 2025

VEi Project No: E24140

One Galleria Blvd. Suite 1900  
Metairie, LA 70001  
Ph: 917.822.7982  
[www.veiglobal.com](http://www.veiglobal.com)



Title:	AMALGAMATED SUGAR COMPANY THIN JUICE EVAPORATOR PROJECT ELECTRICAL COVER SHEET
--------	--



AMALGAMATED SUGAR COMPANY  
2320 ORCHARD DRIVE EAST  
TWIN FALLS, IDAHO 83301

Date: 2025.05.02  
Chkd By: JM  
Dsqn By: BP

ing Size:

Project:	E24140	R
Dwg:	E.00	

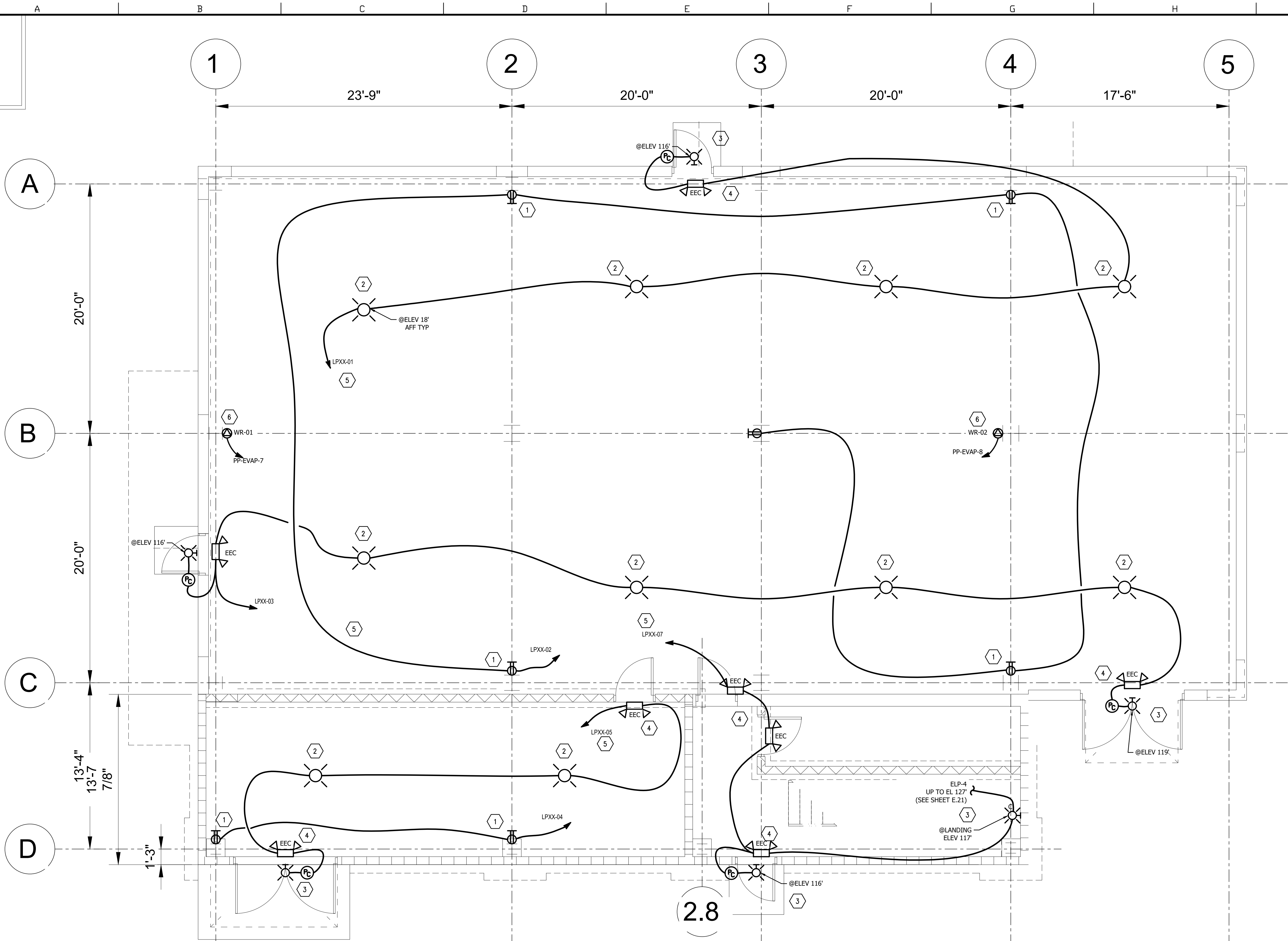












### GENERAL NOTES THIS SHEET

- A. ABOVE GRADE CONDUIT SHALL BE RIGID GALVANIZED STEEL (RGS).
- B. FLEXIBLE METAL CONDUIT SHALL BE LIQUATITE TYPE LA OR EQUAL.
- C. WIRE TYPE SHALL BE XHHW-2.
- D. CONTRACTOR SHALL SUPPLY CIRCUIT BREAKERS FOR LIGHTING PANEL.
- E. ALL LIGHTING FIXTURES SHALL BE PROVIDED BY CONTRACTOR. SEE LUMINAIRE SCHEDULE FOR FIXTURE TYPE.
- F. 120V DUPLEX RECEPTACLES SHALL BE DANIEL WOODHEAD-MOLEX CAT #130146-0131, NEMA 5-15 WET LOCATION MOUNTED ON AN FD BOX.
- G. WELDING RECEPTACLES SHALL BE CROUSE-HINDS 480V 60A CAT#AR637 MOUNTED ON A BACK BOX W/1 1/4" NPT. SEE RECEPTACLES DETAILS.
- H. ALL 120V 20A CIRCUITS SHALL CONSIST OF ONE BLACK #12 HOT WIRE, ONE WHITE #12 NEUTRAL AND ONE DEDICATED GREEN #12 EQUIPMENT GROUNDING CONDUCTOR.
- I. WELDING CIRCUITS SHALL CONSIST OF THREE #6 POWER CONDUCTORS AND ONE GREEN #10 EQUIPMENT GROUNDING CONDUCTOR IN A 1" RGC.
- J. LIGHTING CIRCUITS TO UNSWITCHED LIGHTS ON THE ROOF AND ABOVE EXTERIOR DOORS SHALL BE RUN THROUGH A PHOTOCELL.
- K. CONTRACTOR SHALL FIELD VERIFY THAT ALL FIXTURE LOCATIONS DO NOT IMPEDE EQUIPMENT AND PIPING LOCATIONS/INSTALLATIONS.

### FLAG NOTES THIS SHEET

CONTRACTOR SHALL PROVIDE LABOR AND MATERIAL, UNLESS NOTED OTHERWISE, TO PERFORM THE FOLLOWING TASKS:

- 1. INSTALL SEVEN 120V DUPLEX RECEPTACLES AT LOCATIONS SHOWN ON THIS DRAWING. INSTALL TWO 20A 120V CIRCUIT TO THE RECEPTACLES FROM THE LIGHTING PANEL.
- 2. INSTALL EIGHT TYPE A HIGH BAY FIXTURES IN THE PRODUCTION AREA OF THE NEW EVAPORATOR STRUCTURE AND TWO IN THE MCC ROOM. SEE LUMINAIRE SCHEDULE.
- 3. INSTALL FOUR TYPE C WALL MOUNT LIGHT FIXTURES WITH PHOTO EYE ABOVE THE TWO FIRST LEVEL ROLLUP DOORS AND THE TWO EXTERIOR MAN DOORS.
- 4. INSTALL SEVEN TYPE EEC EMERGENCY/EXIT LIGHTS AT THE LOCATIONS SHOWN.
- 5. INSTALL 20A 120V LIGHTING CIRCUITS TO THE LIGHT FIXTURES AS SHOWN ON DRAWING FROM THE LIGHTING PANEL.
- 6. INSTALL 480V 60A WELDING RECEPTACLE AND BOX AT TWO LOCATIONS SHOWN. INSTALL A 60A POWER FEEDER TO EACH RECEPTACLE FROM PP-EVAP.



ELECTRICAL- EVAP LIGHTING/RECEPT-1ST FLOOR EL. 107'

Scale: 1/4" = 1'-0"

No.	Date	By	Revision	Ad. No.
B	2025.06.23	JM	ISSUE FOR BID	
A	2025.06.18	JM	ISSUED FOR REVIEW	

PRELIMINARY  
NOT FOR  
CONSTRUCTION  
23 JUNE 2025

4990 Royal Gulf Cr  
Fort Myers, FL 33966  
Ph: 239.768.1778, Fax: 239.210.2168  
www.veiglobal.com



Title:  
AMALGAMATED SUGAR COMPANY EVAPORATOR PROJECT  
LIGHTING & RECEPTACLE PLAN  
GROUND LEVEL EL. 107'-0



AMALGAMATED SUGAR COMPANY  
2320 ORCHARD DRIVE EAST  
TWIN FALLS, ID 83301

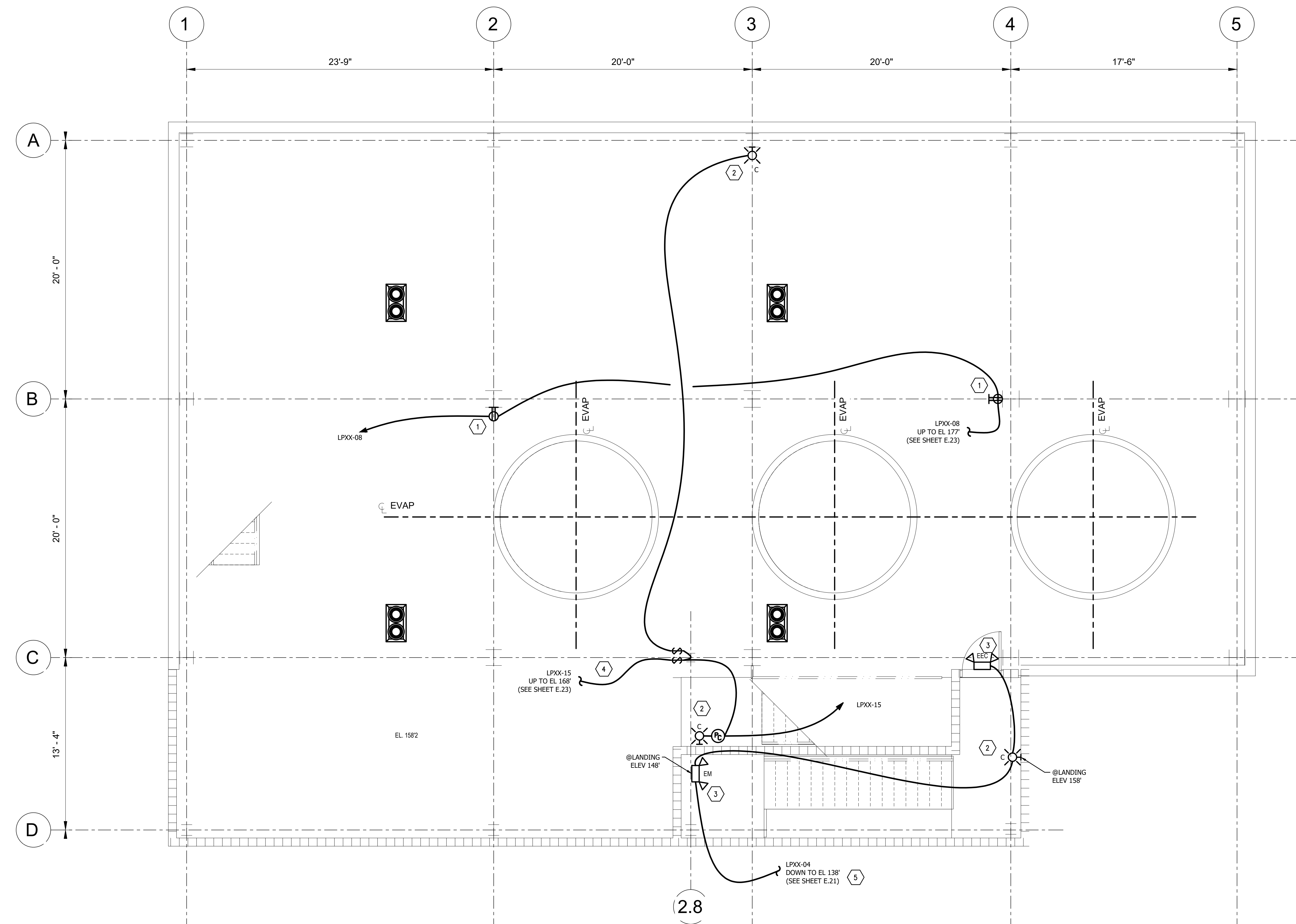
Date: 2025.05.05  
Chkd By: J.MCMURTRY  
Dsgn By: B.PENA  
Project: E24140  
Dwg: E.20

Dwg Size:  
24X36  
Revision:  
B





A B C D E F G H J K L



### GENERAL NOTES THIS SHEET

- A. ABOVE GRADE CONDUIT SHALL BE RIGID GALVANIZED STEEL (RGS).
- B. FLEXIBLE METAL CONDUIT SHALL BE LIQUATITE TYPE LA OR EQUAL.
- C. WIRE TYPE SHALL BE XHHW-2.
- D. CONTRACTOR SHALL SUPPLY CIRCUIT BREAKERS FOR LIGHTING PANEL.
- E. ALL LIGHTING FIXTURES SHALL BE PROVIDED BY CONTRACTOR. SEE LUMINAIRE SCHEDULE FOR FIXTURE TYPE.
- F. 120V DUPLEX RECEPTACLES SHALL BE DANIEL WOODHEAD-MOLEX CAT #130146-0131, NEMA 5-15 WET LOCATION MOUNTED ON AN FD BOX.
- G. WELDING RECEPTACLES SHALL BE A MELTRIC 480V 60A CAT#63-64063 MOUNTED ON A 30DEG POLY ANGLE WITH METAL BOX W/1" NPT CAT #713C3N10. SEE RECEPTACLES DETAILS.
- H. ALL 120V 20A CIRCUITS SHALL CONSIST OF ONE BLACK #12 HOT WIRE, ONE WHITE #12 NEUTRAL AND ONE DEDICATED GREEN #12 EQUIPMENT GROUNDING CONDUCTOR.
- I. LIGHTING CIRCUITS TO UNSWITCHED LIGHTS ON THE ROOF AND ABOVE EXTERIOR DOORS SHALL BE RUN THROUGH A PHOTOCELL.
- J. CONTRACTOR SHALL FIELD VERIFY THAT ALL FIXTURE LOCATIONS DO NOT IMPEDE EQUIPMENT AND PIPING LOCATIONS/INSTALLATIONS.

### FLAG NOTES THIS SHEET

CONTRACTOR SHALL PROVIDE LABOR AND MATERIAL, UNLESS NOTED OTHERWISE, TO PERFORM THE FOLLOWING TASKS:

- 1 INSTALL TWO 120V DUPLEX RECEPTACLES AT LOCATIONS SHOWN ON THIS DRAWING. INSTALL ONE 20A 120V CIRCUIT TO THE RECEPTACLES FROM THE LIGHTING PANEL.
- 2 INSTALL TWO TYPE C WALL MOUNT LIGHT FIXTURES IN THE ROOFTOP AREA AND ONE FIXTURE IN THE STAIRWELL AT THE LOCATIONS SHOWN.
- 3 INSTALL ONE TYPE EM EMERGENCY AND ONE TYPE EEC EMERGENCY/EXIT AT THE LOCATIONS SHOWN IN THE STAIRWELL.
- 4 INSTALL 20A 120V LIGHTING CIRCUITS VIA SNAP SWITCHES TO THE ROOFTOP LIGHT FIXTURES AS SHOWN ON DRAWING FROM THE LIGHTING PANEL.
- 5 INSTALL 20A 120V LIGHTING CIRCUIT TO THE STAIRWELL LIGHT FIXTURES AS SHOWN ON DRAWING FROM THE LIGHTING PANEL.



### ELECTRICAL-EVAP LIGHTING/RECEPT-ROOFTOP EL. 158'

Scale: 1/4" = 1'-0"

No.	Date	By	Revision	Ad. No.
B	2025.06.23	JM	ISSUE FOR BID	
A	2025.06.18	JM	ISSUED FOR REVIEW	

PRELIMINARY  
NOT FOR  
CONSTRUCTION  
18 JUNE 2025

4990 Royal Gulf Cr  
Fort Myers, FL 33966  
Ph: 239.768.1778, Fax: 239.210.2168  
www.veiglobal.com



Title:  
AMALGAMATED SUGAR COMPANY EVAPORATOR PROJECT  
LIGHTING & RECEPTACLE PLAN  
ROOF LEVEL EL. 158'-2"



AMALGAMATED SUGAR COMPANY  
2320 ORCHARD DRIVE EAST  
TWIN FALLS, ID 83301

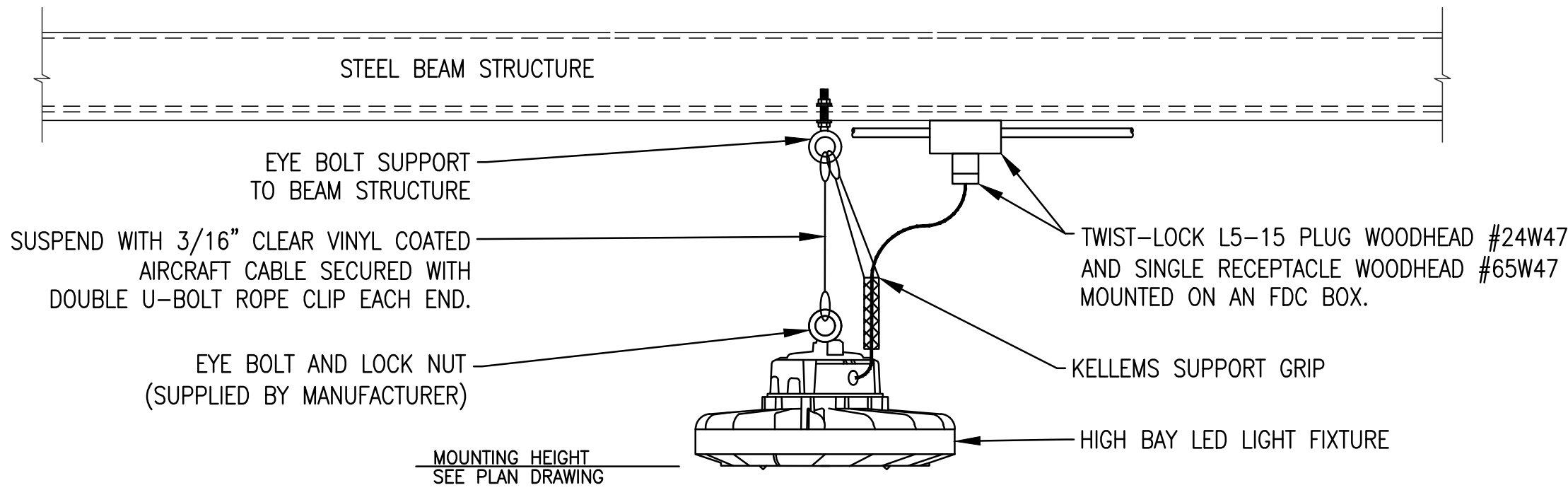
Date:	2025.05.05	Dwg. Size:	24X36
Chkd By:	J.MCMURTRY	Project:	E24140
Dsgn By:	B.PENA	Revision:	B
Dwg:	E.22		

C:\Users\jmcumrtry\Documents\Take Home Project\TASCO\E24140 E.22 LIGHTING RECEPT ROOF PLAN EL 158'-2-.dwg (RB) Plotted on: May, 5, 2025- 4:07PM by Joe McMurtry

C:\Users\jmcumrty\Documents\Take Home Project\TASCO\E24140 E.23 LIGHTING RECEPT PLAN MEZZ EL 167' - 177'.dwg (RB) Plotted on: May, 9, 2025- 7:00AM by Joe McMurtry

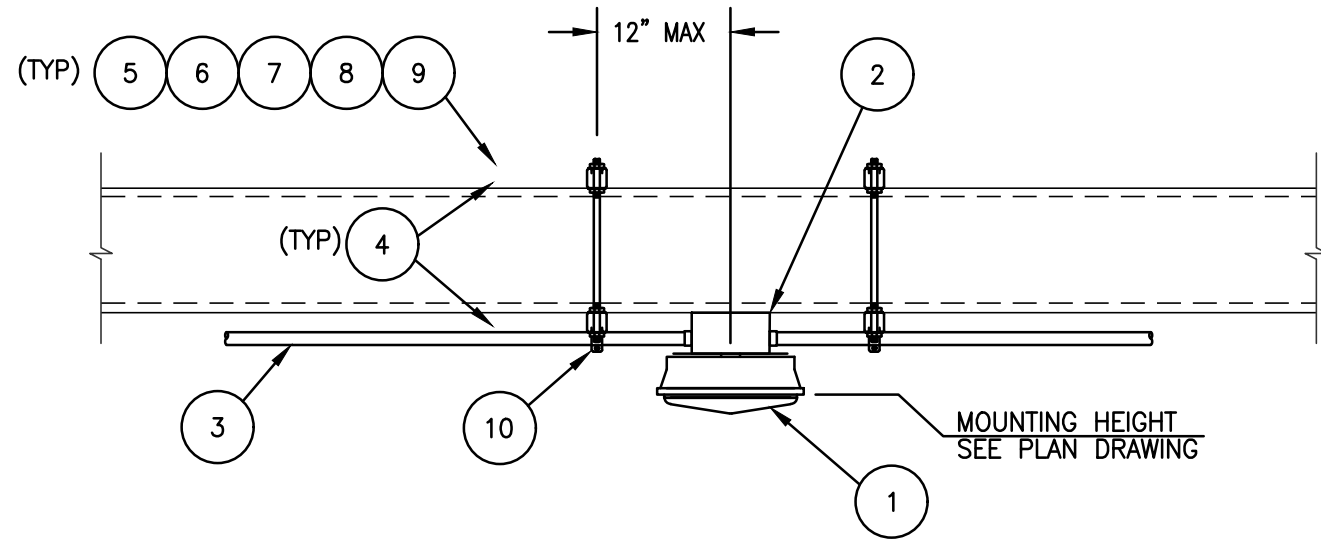


LUMINAIRE FIXTURE SCHEDULE										
TYPE	QUANTITY	MANUFACTURER	CATALOG NUMBER	FIXTURE DESCRIPTION	MOUNTING	LUMENS	WATTS	VOLTS	LOCATION	REMARKS
A	12	KEYSTONE LIGHTING	KT--RHLED200PS-14C8CSB-VDIM-P	HIGH BAY LED WET LOCATION	RING BOLT	24,150	150	120/277V	SEE PLANS	
B	1	ATLAS LIGHTING	CPMS3-12L	LOW PROFILE CANOPY	SURFACE	12,000	60	120/277V		
C	17	ATLAS LIGHTING	WPM-64LED	MEDIUM WALL LIGHT	SURFACE	7237	61	120/208V	SEE PLANS	
D	6	ATLAS LIGHTING	SLPS-9L-T2-5K-B	LED FLOOD LIGHT	KNUCKLE/TRUNION/ SLIPFITTER	8859	63	120/208V	SEE PLANS	USE MOUNTING FOR SPECIFIC APPLICATION
EEC	9	ATLAS LIGHTING	EECPRWR	LED EXT/EMERGENCY COMBO - RED	SURFACE		5	120/277V	SEE PLANS	
EM	2	ATLAS LIGHTING	EMO2A	LED OVAL 2 HEADED EMERGENCY	SURSFACE	43.9	5	120/277V	SEE PLANS	



1 PENDANT HIGH BAY LIGHT FIXTURE MOUNT DETAIL

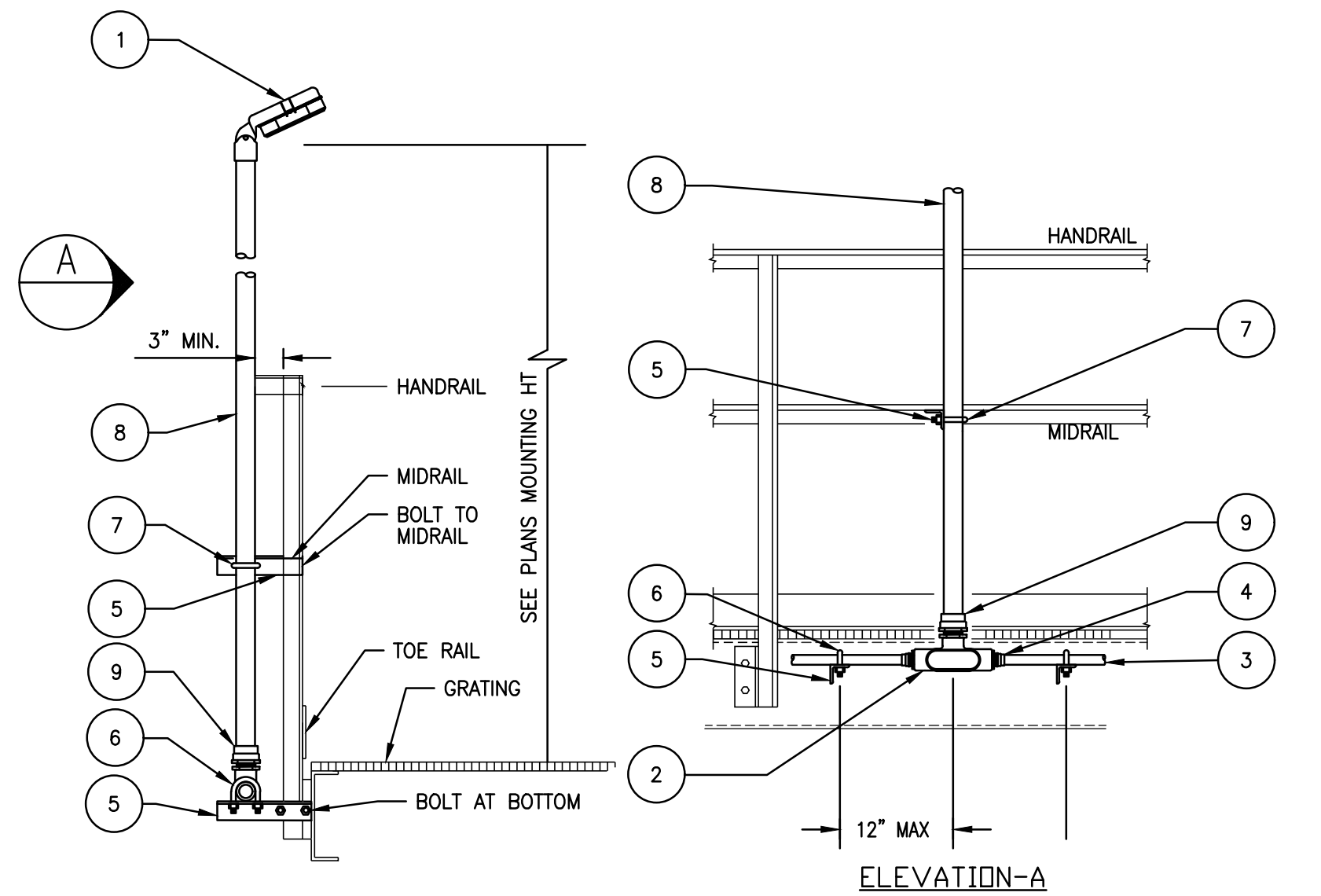
Scale: NTS



ITEM	QTY.	DESCRIPTION
1	1	LIGHT FIXTURE TYPE "LED", CANOPY MOUNT, (SEE FIXTURE SCHEDULE)
2	1	JUNCTION BOX
3		LIGHTING CONDUIT
4	4	1 5/8" CHANNEL, HOT DIPPED GALV., UNISTRUT #P1000-HG OR EQUAL (LENGTH AS REQUIRED)
5	4	1/2"-13 THREADED ROD, 316 STAINLESS STEEL (LENGTH AS REQUIRED)
6	8	FLAT PLATE FITTING, 1-5/8"x1-5/8", 1/2" BOLT HOLE, 316 SS, UNISTRUT #P1064-SS OR EQUAL
7	16	1/2" -13 HEX NUT, 316 STAINLESS STEEL
8	16	1/2" LOCKWASHER, 316 STAINLESS STEEL
9	16	1/2" FLAT WASHER, 316 STAINLESS STEEL
10	2	3/4" CONDUIT CLAMP, UNISTRUT #P1112HG OR EQUAL

2 CANOPY LIGHT FIXTURE DETAIL

Scale: NTS



ITEM	QTY.	DESCRIPTION
1	1	NEW LIGHT FIXTURE SEE LUMINAIRE SCHEDULE
2	1	1 1/2" TEE FITTING, FORM 7, CROUSE-HINDS #T57 SA W/ COVER #570F SA & GASKET #GASK575 OR EQUAL
3	AS REQ'D	3/4" CONDUIT, RIGID ALL
4	2	1 1/2" x 3/4" REDUCER, CROUSE-HINDS #RES2 SA OR EQUAL
5	3	2" x 2" x 1/4" ANGLE, GALVANIZED (LENGTH AS REQUIRED)
6	2	3/4" RIGHT ANGLE CONDUIT CLAMP, CROUSE-HINDS #RAC75HD OR EQUAL
7	1	1 1/2" U-BOLT SET, CROUSE-HINDS #UBM150HD
8	10'	1 1/2" CONDUIT, RIGID ALL
9	1	1 1/2" UNION, CROUSE-HINDS #UNY505 OR EQUAL

1 FLOOD/RAIL LIGHT FIXTURE DETAIL

Scale: NTS

No.	Date	By	Revision	Ad. No.
B	2025.06.23	JM	ISSUE FOR BID	
A	2025.06.16	JM	ISSUED FOR REVIEW	

PRELIMINARY  
NOT FOR  
CONSTRUCTION  
23 JUNE 2025

4990 Royal Gulf Ct  
Fort Myers, FL 33966  
Ph: 239.768.1778, Fax: 239.210.2168  
www.veiglobal.com



Title:  
AMALGAMATED SUGAR COMPANY EVAPORATOR PROJECT  
LIGHTING DETAILS & LUMINAIRE SCHEDULE



AMALGAMATED SUGAR COMPANY  
2320 ORCHARD DRIVE EAST  
TWIN FALLS, ID 83301

Date: 2025.05.05  
Chkd By: J.McMURTRY  
Dsgn By: B.PENA  
Project: E24140  
Dwg: E.24

Dwg Size:  
24X36  
Revision:  
B







